



License No. 800025015  
FL License # CMTL-0003  
CLIA No. 10D1094068

# Certificate of Analysis

Compliance Test

## REMEDY PROCESSORS

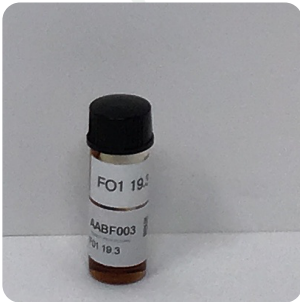
Batch # F01 19.3  
Batch Date: 2021-04-12  
Extracted From: Remedy

Test Reg State: Florida

Order # REM210412-070012  
Order Date: 2021-04-12  
Sample # AABF003

Sampling Date: 2021-04-13  
Lab Batch Date: 2021-04-13  
Completion Date: 2021-04-19

Initial Gross Weight: 8.569 g



Product Image

Potency  
Tested



### Potency - 11

Specimen Weight: 55.200 mg

Analyte	Dilution (1:n)	LOD (%)	LOQ (%)	Result (mg/g)	(%)
CBD	1000.000	0.000054	0.001	796.940	13.157
CBN	1000.000	0.000014	0.001	131.570	0.857
CBDA	1000.000	0.000011	0.001	8.570	0.602
CBC	1000.000	0.000018	0.001	6.020	0.176
CBG	1000.000	0.000248	0.001	1.760	<LOQ
Delta-9 THC	1000.000	0.000013	0.001	<LOQ	<LOQ
THCV	1000.000	0.000007	0.001	<LOQ	<LOQ
Delta-8 THC	1000.000	0.000026	0.001	<LOQ	<LOQ
CBGA	1000.000	0.00008	0.001	<LOQ	<LOQ
CBDV	1000.000	0.000065	0.001	<LOQ	<LOQ
THCA-A	1000.000	0.000032	0.001	<LOQ	<LOQ

Tested  
(HPLC/LCMS)



### Potency Summary

Total THC None Detected	Total CBD 80.446%
Total CBG 0.176%	Total CBN 13.157%
Other Cannabinoids 0.602%	Total Cannabinoids 94.381%

Xueli Gao Lab Toxicologist  
Ph.D., DABT

Aixia Sun Lab Director/Principal Scientist  
D.H.Sc., M.Sc., B.Sc., MT (AAB)



Definitions and Abbreviations used in this report: \*Total CBD = CBD + (CBD-A \* 0.877), \*Total THC = THCA-A \* 0.877 + Delta 9 THC, \*CBG Total = (CBGA \* 0.877) + CBG, \*CBN Total = (CBNA \* 0.877) + CBN, \*Other Cannabinoids Total = CBC + CBDV + THCV + THCV-A, \*Total Detected Cannabinoids = CBD Total + CBG Total + CBN Total + THC Total + CBC + CBDV + THCV + THCV-A, \*Analyte Details above show the Dry Weight Concentrations unless specified as 12% moisture concentration. (mg/ml) = Milligrams per Milliliter, LOQ = Limit of Quantitation, LOD = Limit of Detection, Dilution = Dilution Factor (ppb) = Parts per Billion, (%) = Percent, (cfu/g) = Colony Forming Unit per Gram (cfu/g) = Colony Forming Unit per Gram, LOD = Limit of Detection, (µg/g) = Microgram per Gram (ppm) = Parts per Million, (ppm) = (µg/g), (aw) = aw (area ratio) = Area Ratio, (mg/Kg) = Milligram per Kilogram, \*Measurement of Uncertainty = +/- 5%



This report shall not be reproduced, without written approval, from ACS Laboratory. The results of this report relate only to the material or product analyzed. Test results are confidential unless explicitly waived otherwise. Accredited by a third-party accrediting body as a competent testing laboratory pursuant to ISO/IEC 17025 of the International Organization for Standardization.